

The Easy
Upgrade

to



FOCUS
and ACT



EasyIP 2.0+ Network Cameras **with AcuSense**

Deep Learning Security.
No Deep Pockets Required.



AcuSense Technology

For more information, please visit our
AcuSense page.



Headquarters

No.555 Qianmo Road, Binjiang District, Hangzhou 310051, China
T +86-571-8807-5998
overseasbusiness@hikvision.com

Follow us on social media to get the latest product and solution information



HIKVISION

CONTENTS

What's New?

Motion Detection 2.0 with AcuSense
Better Imaging Performance
Ease of Use

Fixed Lens Network Cameras
Motorized Varifocal Network Cameras

What Are the Options?

Where Can They Be Used?

Calling All Hikvision
Distributors and Installers!

What's New?



Compared to earlier generations, Hikvision's EasyIP 2.0+ Network Cameras with AcuSense (DS-2CD2xx3G2) feature:

- Motion Detection 2.0 with AcuSense
- Better Imaging Performance
- Improved Water Resistance
- More Models with Built-in Mics

Motion Detection 2.0 with AcuSense

Motion Detection 2.0 adds a touch of intelligence to conventional motion detection. In version 2.0, Hikvision's AcuSense Technology for precise human and vehicle identification retains the original agility of motion detection while vastly improving its accuracy.



Focused

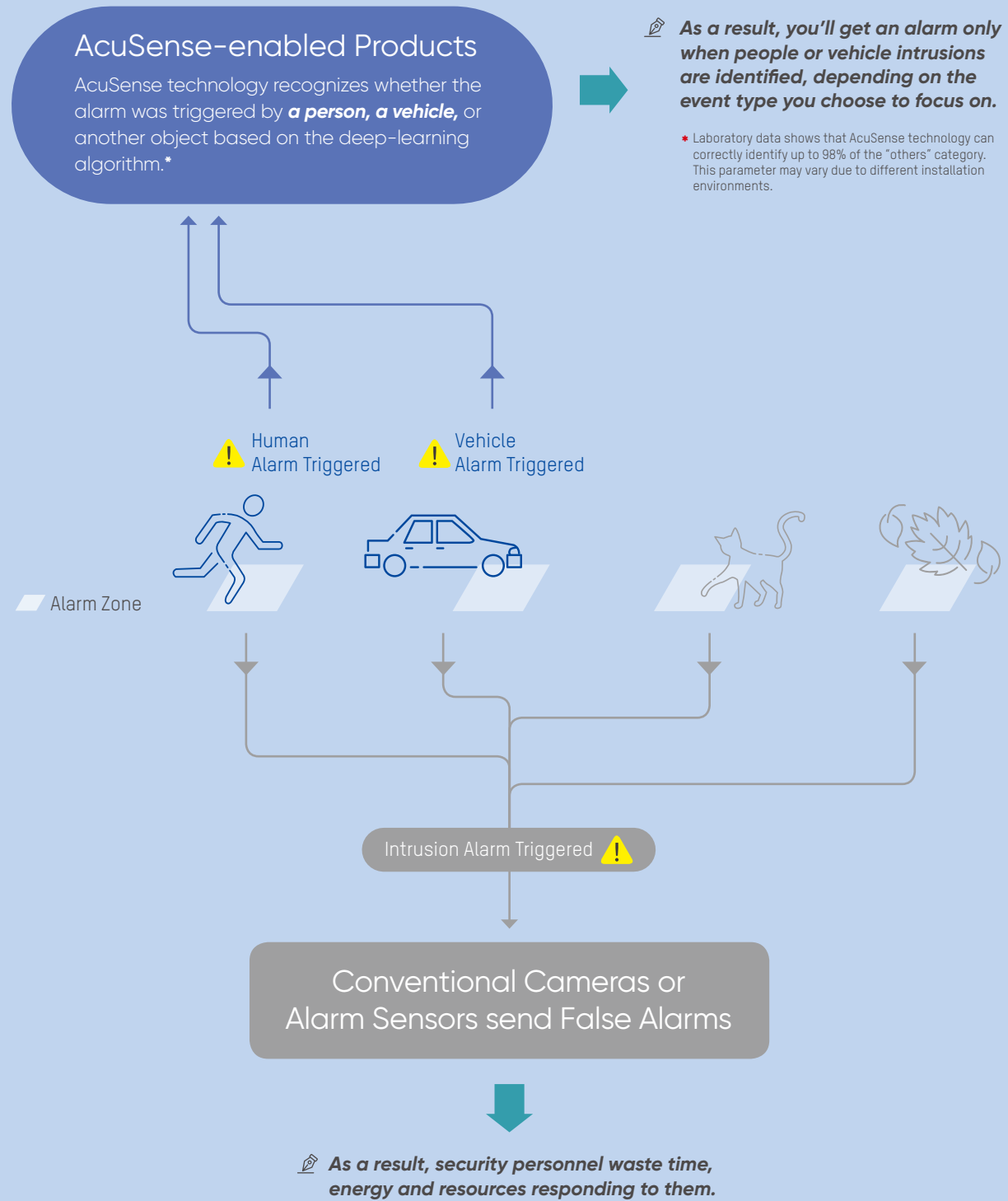
Concentrate on human and vehicle events



Efficient

Quick target searches for human or vehicle events

How is AcuSense different



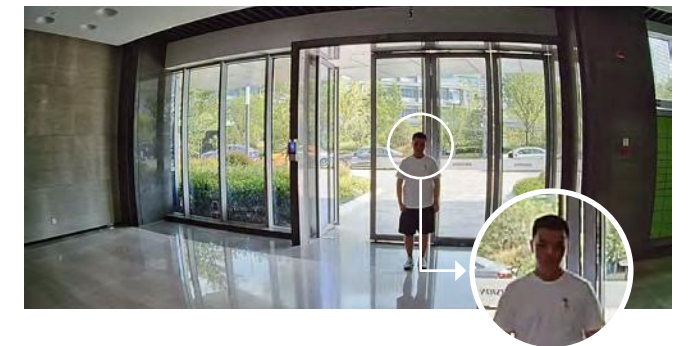
Better Imaging Performance

EasyIP 2.0+ Network Cameras with AcuSense provide sharper details and better WDR performance.

DS-2CD2xx3G0

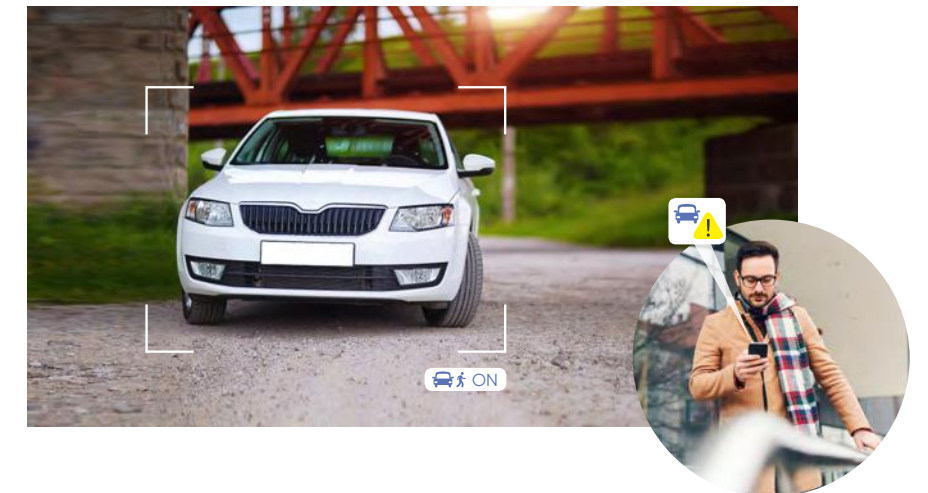


DS-2CD2xx3G2



Ease of Use

The AI-powered human & vehicle identification is ON by default. You can enjoy the convenience of smart features with no extra installation or configuration effort than using a traditional CCTV camera.



What Are the Options?

Fixed Lens Network Cameras

- Up to 4K resolution
- 2.8, 4, or 6 mm focal lengths
- F1.6 aperture
- 120 dB WDR
- IP67, IK10
- -U: built-in mic



DS-2CD20x3G2
• EXIR Mini Bullet
• 2, 4, or 6 MP, or **4K**



DS-2CD21x3G2
• EXIR Dome
• 2, 4, or 6 MP, or **4K**



DS-2CD23x3G2
• EXIR Turret
• 2, 4, or 6 MP, or **4K**



DS-2CD24x3G2
• EXIR Cube
• 2, 4, or 6 MP, or **4K**



DS-2CD25x3G2
• EXIR Mini Dome
• 2, 4, or 6 MP, or **4K**



DS-2CD2Tx3G2
• EXIR Bullet
• 2, 4, or 6 MP, or **4K**



DS-2CD2Ex3G2
• Recessed Dome
• 2 or 4 MP

Motorized Varifocal Network Cameras

- Up to 4K resolution
- 2.8 to 12 mm focal lengths
- F1.6 aperture
- 120 dB WDR
- IP67, IK10



DS-2CD26x3G2
• EXIR VF Bullet
• 2, 4, or 6 MP, or **4K**



DS-2CD27x3G2
• EXIR VF Dome
• 2, 4, or 6 MP, or **4K**



DS-2CD2Hx3G2
• EXIR VF Turret
• 2, 4, or 6 MP, or **4K**

Where can They be Used?

EasyIP 2.0+ Network Cameras with AcuSense are well-suited for a variety of applications where users are looking for excellent imaging, affordable AI features, and an abundance of options.



Homes



Stores & Shops



Hotels & Motels



Warehouses



Calling all Hikvision distributors and installers!

By delivering innovative, AI-powered security features at an affordable price point, AcuSense helps Hikvision installers and distributors to sell more, and deliver even more value for customers. This helps all our installers and distributors to build stronger, longer, and more profitable customer relationships.

As an additional benefit, AcuSense-enabled cameras are as easy to install and configure as traditional CCTV cameras, so installers can begin delivering this exciting new technology for customers quickly, and with minimal training. Hikvision also provides all the information and support needed to get started quickly!

For more information on the benefits of Hikvision AcuSense for installers and distributors of Hikvision products, please contact us today.